

# On Premises Server Windows

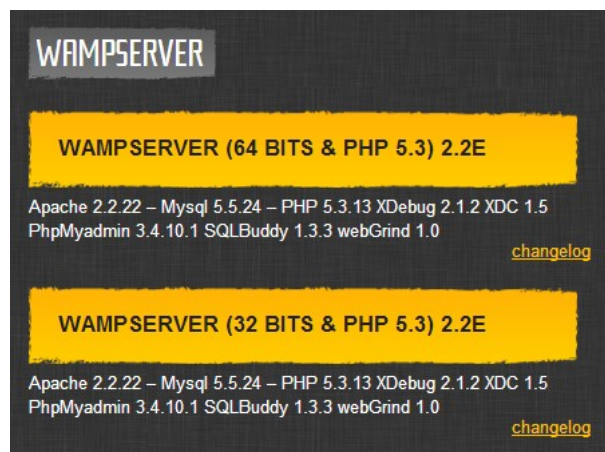
## On Premises Output Time Installation

You can download the Installer Package zipped and update in WampServer installed folder (../wamp/www). After installing WampServer, you can sign up for Output Time with the details and 30 Days Trail License key sent in the mail.

## Installing Wamp Server (Apache / Mysql)

### Downloading WampServer

Download the installer file for the latest version of WampServer > <http://www.wampserver.com/en/#download-wrapper>

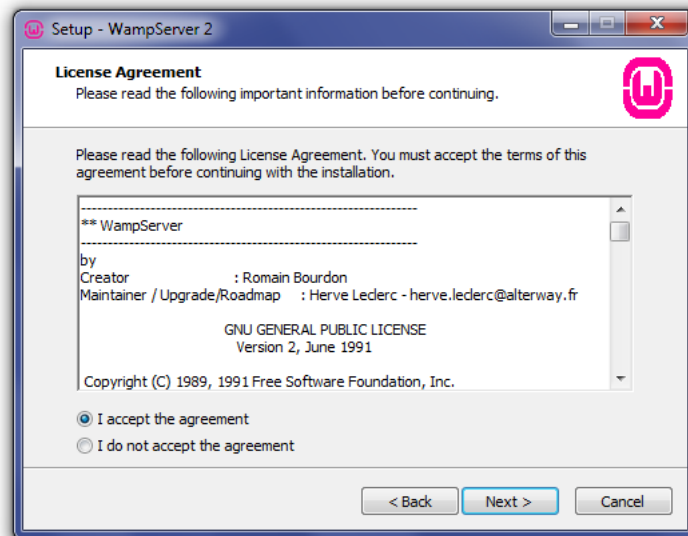


### Installing WampServer

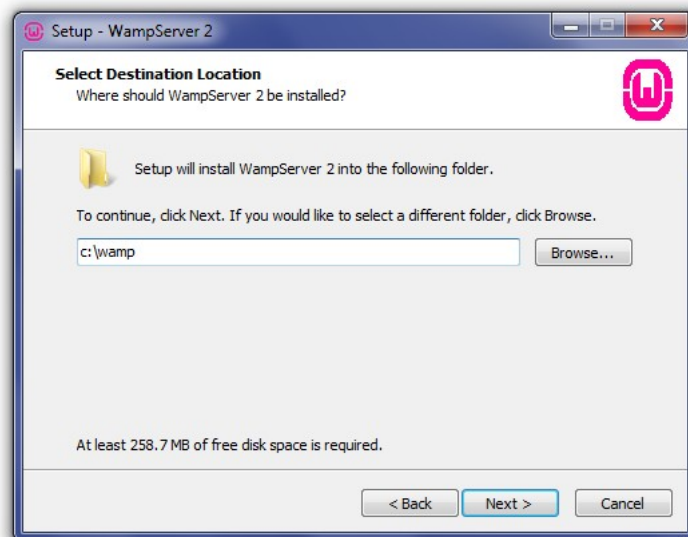
To start the installation process, you need to double-click the installer file and Click Next to continue the installation.



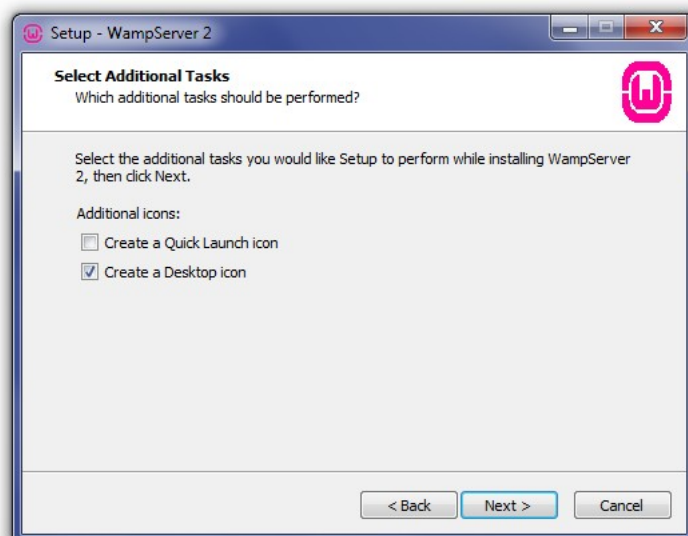
Read the License agreement, check the radio button next to I accept the agreement, then click Next to continue the installation.



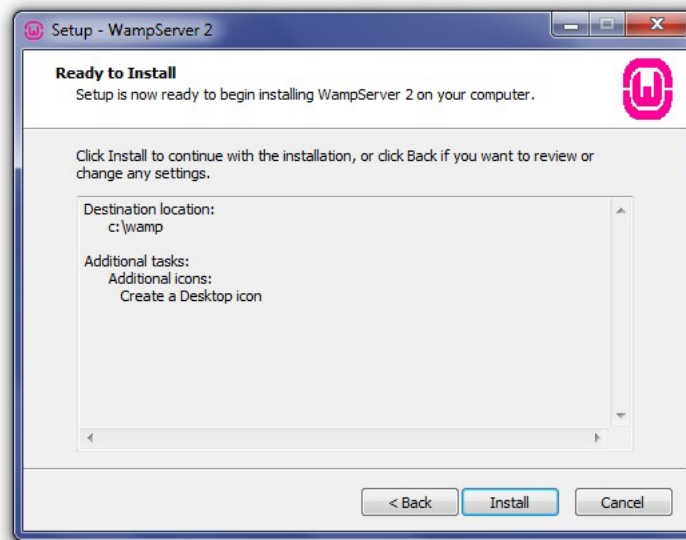
Select Destination to install WampServer in your drive.



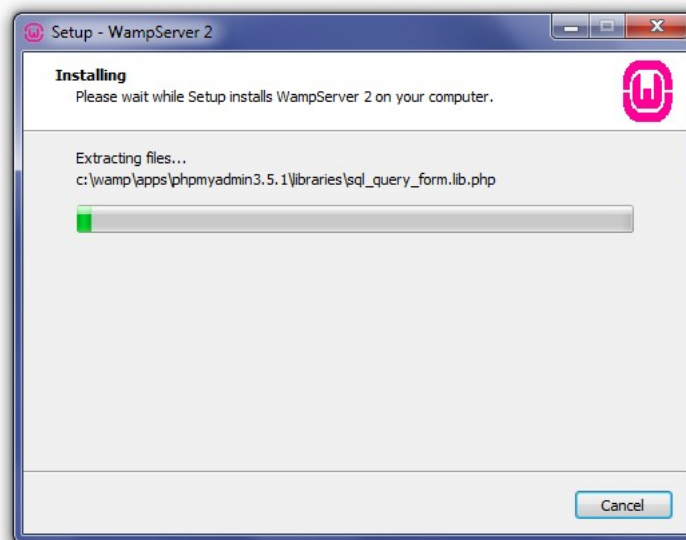
You will be able to select whether you would like a Quick Launch icon added to the taskbar or a Desktop icon created once installation is complete. Make your selections, then click Next to continue.



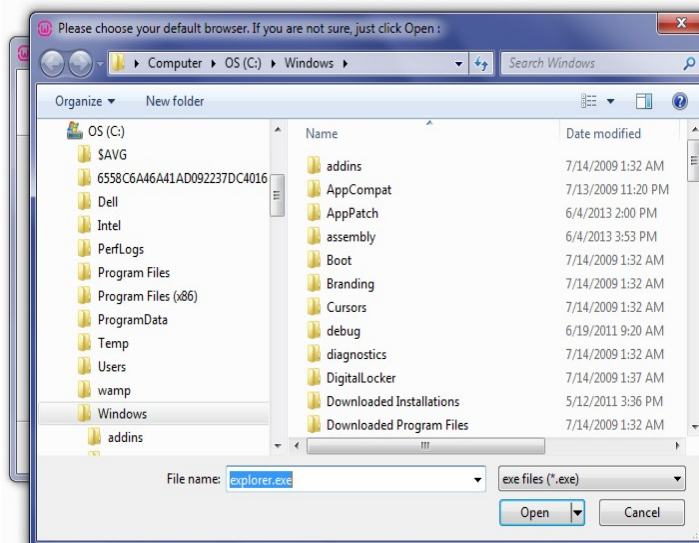
Ready To Install screen where You can review your setup choice and click Install to continue.



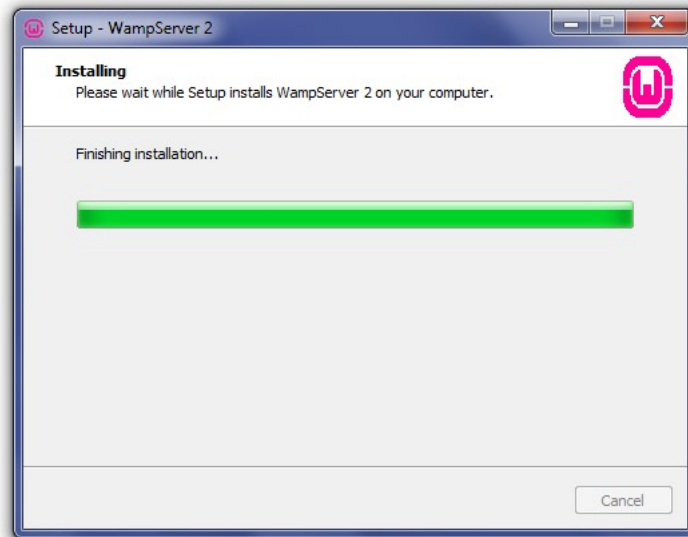
WampServer will begin extracting files to the location you selected .



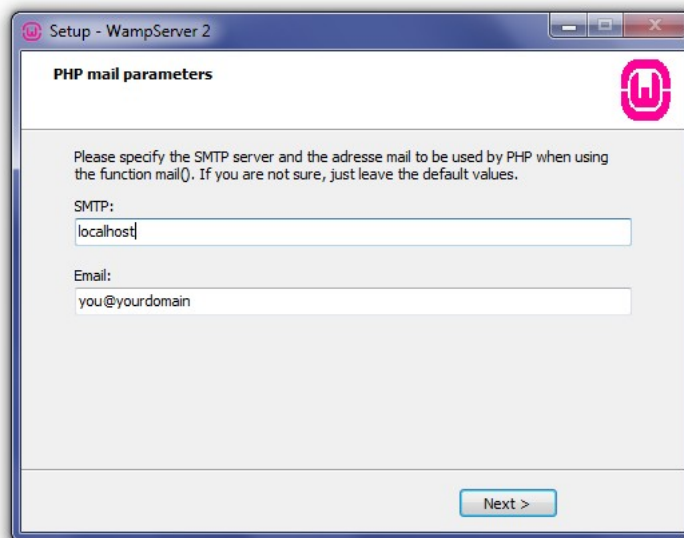
Select your default browser. WampServer defaults to Internet Explorer upon opening the local file browser window.



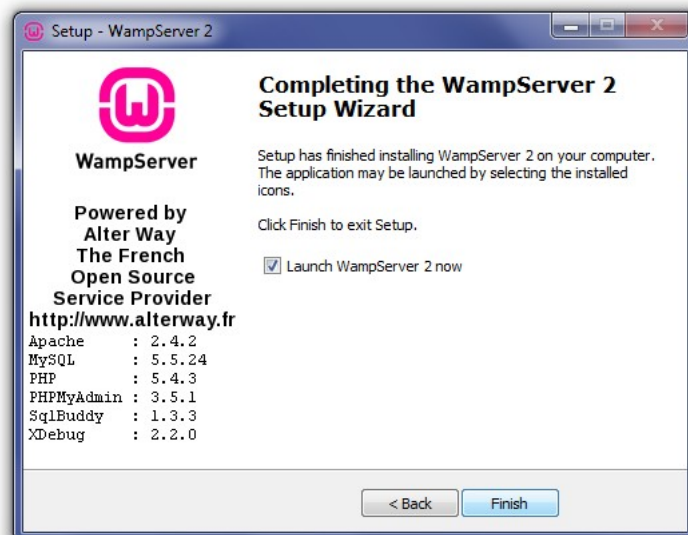
The Setup screen will appear next, showing you the status of the installation process.



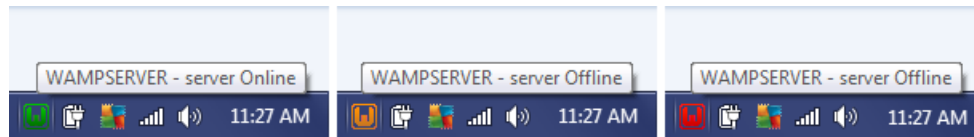
Once the progress bar is completely green, the PHP Mail Parameters screen will appear. Leave the SMTP server as localhost, and change the email address to one of your choosing. Click Next to continue.



The Installation Complete screen will now appear. Check the Launch WampServer Now box, then click Finish to complete the installation.




You should see the WampServer icon appear in the systray on the right side of your taskbar. If the icon is green, then everything is working properly. If the icon is orange, then there are issues with one of the services. If the icon is red, then both Apache and MySQL services aren't running. You will need to resolve those issues before continuing.



## Testing Wamp Server

Once you have completed the installation process, test that your installation is working properly by going to <http://localhost/> in your browser. You should see the WampServer homepage displayed.

**WampServer**

Version 2.2 [Version Française](#)

---

### Server Configuration



Apache Version : 2.4.2  
PHP Version : 5.4.3

Loaded Extensions :

Core	bcmath	calendar	com_dotnet
ctype	date	ereg	filter
ftp	hash	iconv	json
mcrypt	SPL	odbc	pcre
Reflection	session	standard	mysqlnd
tokenizer	zip	zlib	libxml
dom	PDO	Phar	SimpleXML
wddx	xml	xmlreader	xmlwriter
apache2handler	mbstring	gd	mysql
mysqli	pdo_mysql	pdo_sqlite	mbhash
xdebug			

MySQL Version : 5.5.24




### Tools

-  [phpinfo\(\)](#)
-  [phpmyadmin](#)

### Your Projects

### Your Virtual Hosts

### Your Aliases

-  [phpmyadmin](#)
-  [sqlbuddy](#)
-  [webgrind](#)

---

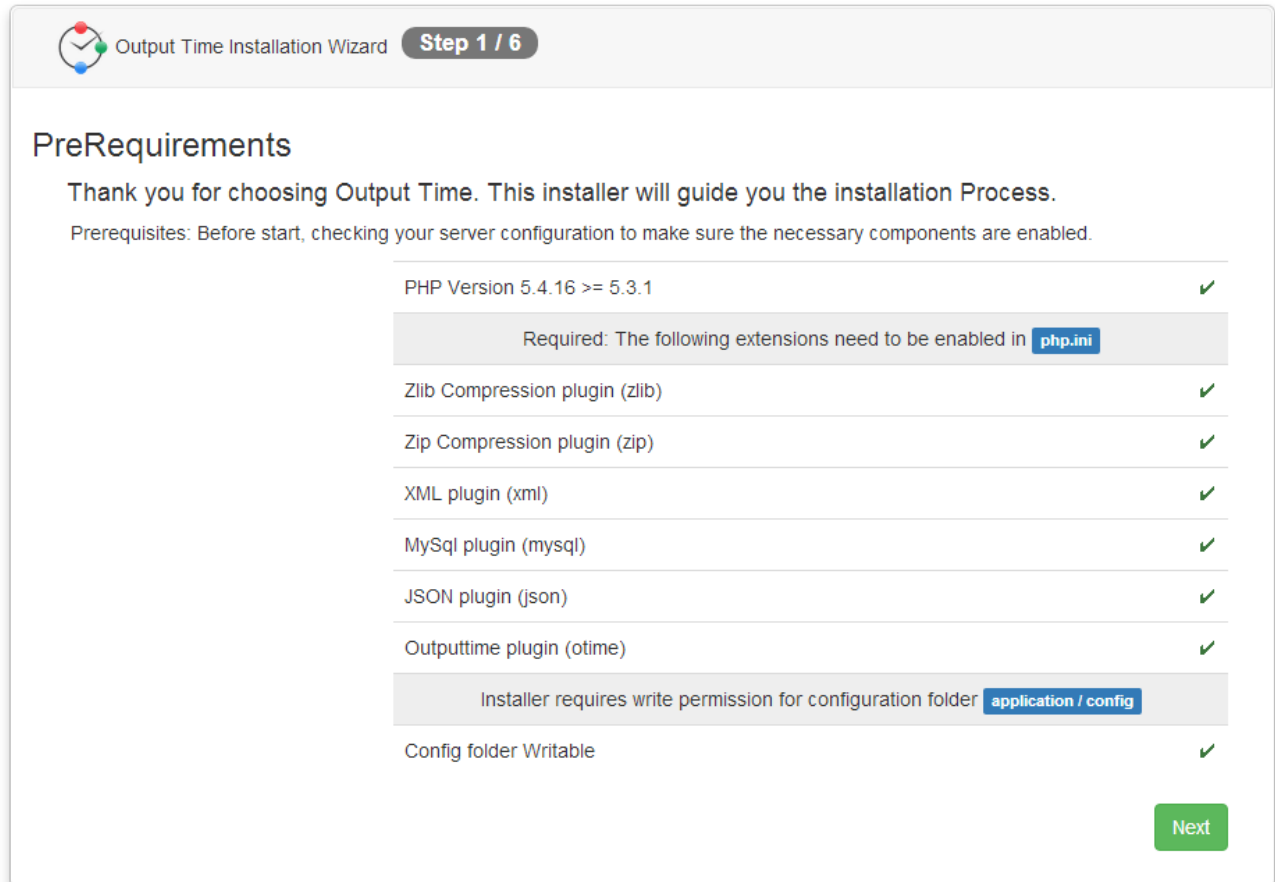
WampServer - [Donate](#) - [Alter Way](#)

## Installing Output Time

Extract the downloaded outputtime zip file and copy the outputtime folder. Then paste it in C:\wamp\www. (You can rename the outputtime folder to any other name). Now open a web browser and go to: <http://localhost/outputtime/>

### Pre-Requirements

Before installation , You should check your server configuration to make sure the below components are enabled.



Output Time Installation Wizard **Step 1 / 6**

### PreRequirements

Thank you for choosing Output Time. This installer will guide you the installation Process.

Prerequisites: Before start, checking your server configuration to make sure the necessary components are enabled.

PHP Version 5.4.16 >= 5.3.1	✓
Required: The following extensions need to be enabled in <a href="#">php.ini</a>	
Zlib Compression plugin (zlib)	✓
Zip Compression plugin (zip)	✓
XML plugin (xml)	✓
MySQL plugin (mysql)	✓
JSON plugin (json)	✓
Outputtime plugin (otime)	✓
Installer requires write permission for configuration folder <a href="#">application / config</a>	
Config folder Writable	✓

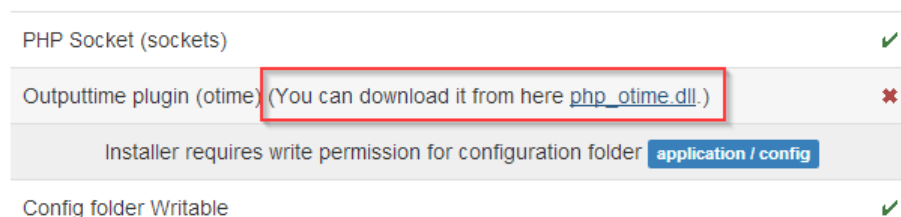
[Next](#)

I ) Installer requires write permission for the configuration folder

II) PHP version should be 5.3.1 and above.

III) You need to enable the PHP extensions in php.ini. Extensions are:

- a) Zlib Compression Plugin
- b) Zip Compression Plugin
- c) XML Plugin
- d) MySQL Plugin
- e) Jason Plugin
- f) Curl Plugin
- g) PHP Scket
- h) Output Time Plugin ( You can download the php\_otime.dll from the link in the installer )



PHP Socket (sockets)	✓
Outputtime plugin (otime)	✗ (You can download it from here <a href="#">php_otime.dll.</a> )
Installer requires write permission for configuration folder <a href="#">application / config</a>	
Config folder Writable	✓

You can copy the .dll file in \wamp\bin\php\php5.4.xx\ext folder  
Add this extension line in php.ini { extension=php\_otime.dll }

```
; XDEBUG Extension
zend_extension = "D:/wamp/bin/php/php5.4.16/zend_ext/php_xdebug-2.2.3-5.4-vc9.dll"

[xdebug]
xdebug.remote_enable = off
xdebug.profiler_enable = off
xdebug.profiler_enable_trigger = off
xdebug.profiler_output_name = cachegrind.out.%t.%p
xdebug.profiler_output_dir = "D:/wamp/tmp"

extension=php_otime.dll
```

Set `max_execution_time` to Zero in php.ini

```
;;;;;;;;;;;;;;;;;;;;;;;;;
; Resource Limits ;
;;;;;;;;;;;;;;;;;;;;;;;;;

; Maximum execution time of each script, in seconds
; http://php.net/max-execution-time
; Note: This directive is hardcoded to 0 for the CLI SAPI
max_execution_time = 0
```

Open my.ini file, by right clicking on WAMP Server → MySQL → my.ini and insert the line `sql_mode=""` in it.

```
[mysqld]
port=3306
sql_mode=""
```

After all plugin's are enabled, you should restart Wamp to enable the settings.

In Installer home screen all plugins enabled with "Yes" option and Next button is active to move next page of the installer.

### Configure Notification Service

1. Install NodeJS from <https://nodejs.org/en/download/>
2. Open System Services
3. Stop `OutputTimeNotification` Service
4. Open Command Prompt (Run As Administrator)
5. Change directory to `outputtime\node` directory.

```
cd D:\wamp\www\ouptuttime\node
```

6. Run the following command.


```
node install.js
```

7. Edit this file `ouptuttime\node\config.ini`
8. In `php_process` section, update the `exe`, `file` attribute values  
; You can refer the sample paths here.  
`exe=D:\wamp\bin\php\php5.4.16\php.exe`  
`file=D:\wamp\www\outputtime\index.php`

9. Open System Services
10. Start the **OTNotify** service

#### Database Configuration

Choose the Data base driver and provide the Host name, User name , Password and Database name.

 Output Time Installation Wizard **Step 2 / 6**

### Database Configurations


Create a Mysql Database for Output Time and provide the database connection information.

Database Driver	<input type="text" value="mysql"/>
Host Name *	<input type="text" value="localhost"/>
User Name *	<input type="text" value="root"/>
Password	<input type="password" value="....."/>
Database Name *	<input type="text" value="outputtime"/>

#### Login Details

Remember the Email and Password which is used to login for the first time as Administrator.

With the Configuration details , you need apply the License key received from online registration.Click 'Next'.

 Output Time Installation Wizard **Step 3 / 6**

### Login Details

Please provide the information below to continue you Output Time installation.


Email *	<input type="text" value="Email"/>
Password *	<input type="password" value="Password"/>
Confirm Password *	<input type="password" value="Confirm Password"/>
First Name *	<input type="text" value="First Name"/>
Last Name	<input type="text" value="Last Name"/>
License Key *	<input type="text" value="License Key"/>

Get license here : <http://www.outputtime.com/index.php/on-premises-register/>



### SMTP Details

To configure multiple outbound email settings, you can provide your SMTP details or you can skip this step. Provide your fully qualified domain name or your SMTP server IP address and your listening Port number. Provide the login credentials(SMTP User Name and Password) in order to connect to the SMTP server and send the emails. Click Next.


 Output Time Installation Wizard **Step 4 / 6**

Please provide the SMTP details below to send emails via this.

SMTP Host Name	<input type="text" value="ssl://smtpout.secureserver.net"/>
SMTP Port	<input type="text" value="465"/>
SMTP User Name	<input type="text" value="noreply@outputtime.com"/>
SMTP Password	<input type="password" value="*****"/>

### Finalizing Installation

Verify the details provided and if you want to change click on Previous. Click Install to start the installation.

 Output Time Installation Wizard **Step 5 / 6**

### Finalising Installation

<b>Database Settings</b>	<b>User Details</b>
Database Driver mysql	Email john@gmail.com
Host Name localhost	Password *****
User Name root	First Name John
Password	Last Name doe
Database Name outputtime	<b>License Details</b>
<b>SMTP Settings</b>	License Key <div>Oc8gdwqvxD3mW2K1qeIq6V8fWCBmFiXmrGir7KAe1Z/hoyKr+DV6e+7tp+z</div>
SMTP Host Name ssl://smtpout.secureserver.net	Company Name Kidsworld
SMTP Port 465	Expiry Date 2015-09-25 06:19:46
SMTP User Name noreply@outputtime.com	Max Users 0
SMTP Password *****	

### [Complete Installation](#)

On successful configuration, you will have a link 'Click here to continue' to access your installed Output Time Application.



Output Time Installation Wizard - Installed

## Congratulations

Your Output Time installation has been completed successfully.

Please make sure to change permission of configuration folder `application/config` to remove write access.

Please rename / remove the `installer.php` file in root directory (or) [Click here to continue](#).

Let's increase our output time!!



John

☐ Remember Password

Login

[Forgot Password?](#)

[Register](#)

Get Started to Enjoy the Project Management & Time tracking